



6 Marine Parade, Sheerness, ME12 2AL

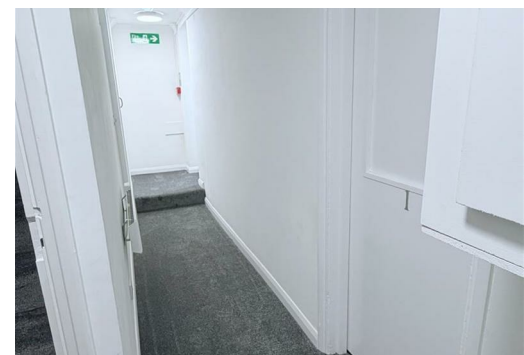
£750 Per month

Nestled along the picturesque Marine Parade in Sheerness, this impressive end-terrace house offers a unique opportunity for those seeking spacious accommodation. With a generous 3,315 square feet of living space, this property boasts nine well-appointed bedrooms, making it ideal for large families or shared living arrangements.

Built in 1900, the house combines classic charm with modern amenities. The interior features a clean and contemporary kitchen, perfect for culinary enthusiasts, alongside a well-maintained bathroom that caters to the needs of its residents. The property is designed to provide comfort and convenience, ensuring a pleasant living experience.

For those interested in renting, the property offers a selection of rooms at competitive prices. Single rooms are available for £750 per calendar month, while those seeking a bit more luxury can opt for a single room with an en suite shower room for the same price. Additionally, double rooms with en suite facilities are offered at £950 per calendar month, providing a range of options to suit different preferences and budgets.

Situated in the vibrant community of Sheerness, residents will enjoy easy access to local amenities, beautiful coastal views, and a welcoming atmosphere. This property presents an excellent opportunity for anyone looking to secure a comfortable and spacious home in a desirable location. Don't miss the chance to make this charming house your new residence.



6 Marine Parade, Sheerness, ME12 2AL

